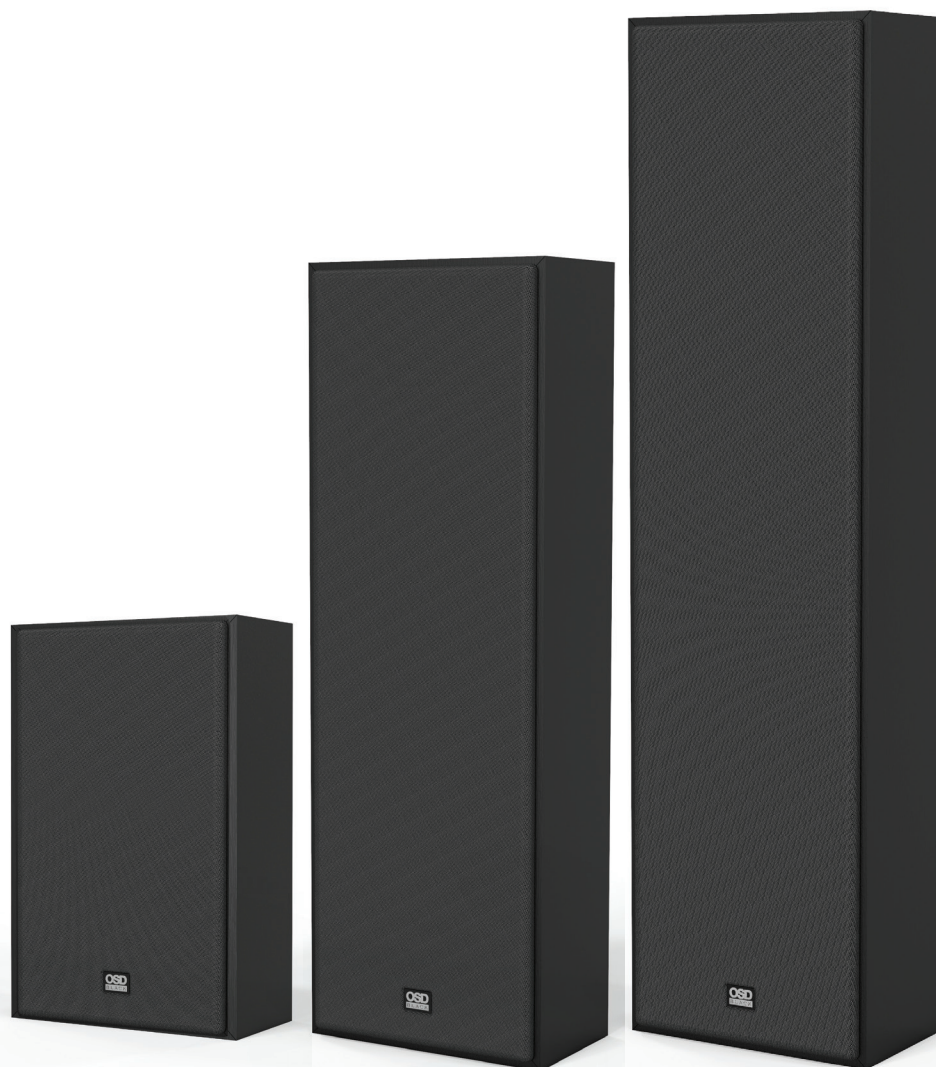




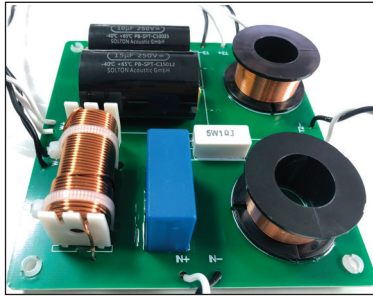
OSD[®]

BLACK

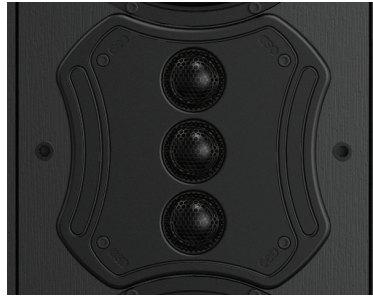
S SERIES MKII
SPECIFICATIONS & FEATURES



S SERIES MKII



1. Custom Second Order X-Over



2. Triple Tweeter Array



3. 8" Long Wood Fiber Inter-thread Double Compressed Woofer Cone

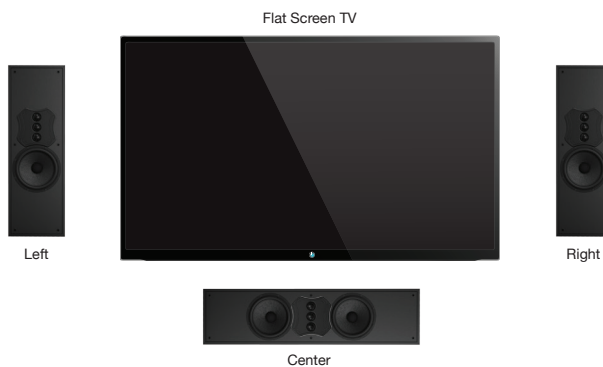
Features

1. Custom-designed and -built crossovers. 2nd Order, 12dB per octave crossover. Higher-quality air-core chokes with 100% oxygen free copper windings, 5% resistors and polypropylene/metal film German capacitors are used in the elegantly laid out and highly refined crossovers. All soldering uses Japanese silver solder for better conductivity.

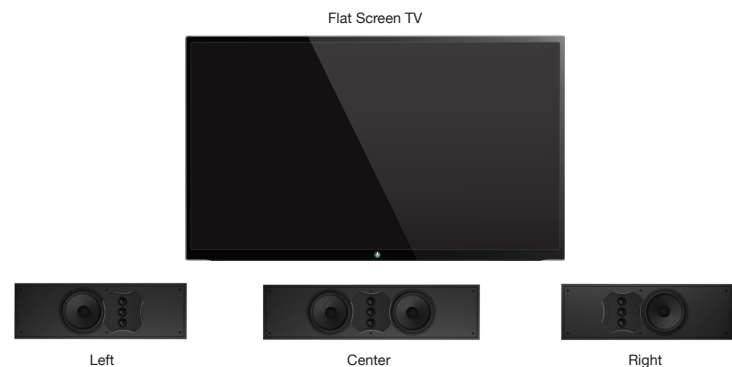
2. The S81 and S82 use a triple tweeter array that sits on a rotatable faceplate, allowing the tweeters to be oriented vertically or horizontally. This ensures perfect high-frequency timbre matching regardless of orientation. It also provides a way to choose whether the room's acoustical characteristics would benefit from a wider or narrower sound field. When mounted vertically the tweeter array has wider horizontal dispersion and narrower vertical dispersion – reducing floor and ceiling reflections. The triple tweeter array also allows for much higher SPL levels and less restricted sound.

3. The 8-inch woofer's cones are made from long wood fiber. A coarser type of paper that further reduces cone resonance, while maintaining rigidity at high SPLs, ensures piston air displacement and, as a result, lower distortion. The improved magnet structure uses a larger low-carbon steel magnet. We also introduced a Triangular 'silent' spider to attach to the pure copper edge-wound voice coil. Flat to 80Hz, -3dB at 70Hz and -10dB at 30Hz, the 12dB per octave roll off is an easy match for subwoofers.

Setup 1



Setup 2





Specifications:

S82 MKII

8" Home Theater / On-Wall Speaker
 Woofer: Dual 8" Long Wood Fiber Inter-thread
 Double Compressed Cone
 Tweeter: Triple Tweeter Array Silk Dome
 X-Over: 12db Second Order at 2200hz
 Cabinet: Front Inverted With High Transparency Grille
 Gold Plated Speaker Terminals - 5-way binding posts
 Power Handling: 300W
 Sensitivity: 92dB 1w/1m
 Max SPL: 116 dB
 Freq Response: 70Hz - 22kHz (Measured On-Wall)
 +/- 3dB and 45Hz -10dB
 Impedance: 4 ohms
 Finish: Black PUV Coated Surface
 Dimensions: HxWxD 39.2" x 10" x 6.25"



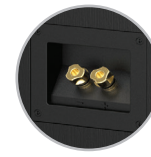
Tweeter Baffle can be Rotated



Tweeter Position



Mounting



Connection



Back

Specifications:

S81 MKII

8" Home Theater / On-Wall Speaker
 Woofer: 8" Long Wood Fiber Inter-thread
 Double Compressed Cone
 Tweeter: Triple Tweeter Array Silk Dome
 X-Over: 12db Second Order at 2200hz
 Cabinet: Front Inverted With High Transparency Grille
 Gold Plated Speaker Terminals - 5-way binding posts
 Power Handling: 200W
 Sensitivity: 91dB 1w/1m
 Max SPL: 112dB
 Freq Response: 70Hz - 22kHz (Measured On-Wall)
 +/- 3dB and 45Hz -10dB
 Impedance: 4 ohms
 Finish: Black PUV Coated Surface
 Dimensions: HxWxD 30.9" x 10" x 6.25"



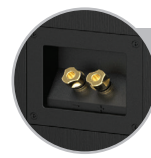
Tweeter Baffle can be Rotated



Tweeter Position



Mounting



Connection

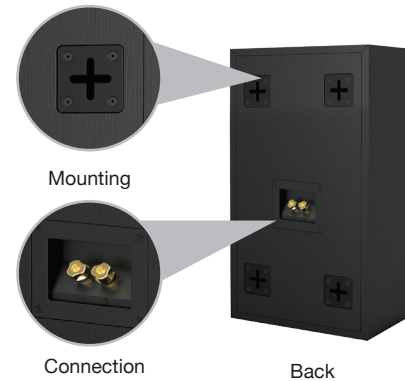


Back

Specifications:

S80 MKII

8" Home Theater / On-Wall Speaker
Woofer: 8" Long Wood Fiber Inter-thread
Double Compressed Cone
Tweeter: Silk Dome
X-Over: 12db Second Order at 2200hz
Cabinet: Front Inverted W/ High Transparency Grille
Gold Plated Terminals - 5-way binding posts
Power Handling: 150W
Sensitivity: 85dB 1w/1m
Max SPL: 108dB
Freq Response: 90Hz - 20kHz (Measured On-Wall)
+/- 3dB and 55Hz -10dB
Impedance: 4 ohms
Finish: Black PUV Coated Surface
Dimensions: HxWxD 16.3" x 10" x 5.5"



WARRANTY

All Optimal Speaker Design speaker products have Limited Lifetime Warranty against defects in materials and workmanship. Proof of purchase must accompany all claims. During the warranty period Optimal Speaker Design will replace any defective part and correct any defect in workmanship without charge for either parts or labor. Optimal Speaker Design may replace returned speakers with a product of equal value and performance. In such cases, some modification to the mounting may be necessary and are not Optimal Speaker Designs responsibility.

For this warranty to apply, the unit must be installed and used according to its written instructions. If necessary, repairs must be performed by Optimal Speaker Design. The unit must be returned to Optimal Speaker Design at the owner's expense and with prior written permission. Accidental damage and shipping damage are not considered defects, nor is damaged resulting from abuse or from servicing performed by an agency or person not specifically authorized in writing by Optimal Speaker Design.

Optimal Speaker Design sells products only through authorized dealers and distributors to ensure that customers obtain proper support and service. Any Optimal Speaker Design product purchased from an unauthorized dealer or other source, including retailers, mail over dealers and on-line sellers will not be honored or serviced under existing Optimal Speaker Design warranty policy. Any sale of product by an unauthorized source or other manner not authorized by Optimal Speaker Design shall void the warranty on the applicable product.

Damage to or destruction of components due to application of excessive power voids the warranty on those parts. In these cases, repairs will be made on the basis of the retail value of the parts and labor. To return for repairs, you must email customer service at RMA@audiogeargroup.com for a Returned Merchandise Authorization (RMA) number# then the unit must be shipped to Optimal Speaker Design at the owner's expense, along with a note explaining the nature of service required. Be sure to pack the speaker(s) in a corrugated container with at least 3 inches of resilient material to protect the unit from damage in transit.

This Warranty Does Not Cover: Damage caused by abuse, accident, misuse, negligence, or improper operation (installation) • Any products that have been altered or modified • Any product whose identifying number of decal, serial #, etc. has been altered, defaced or removed • Normal wear and maintenance.